

MAGI3 Antibody (C-Term)
Purified Rabbit Polyclonal Antibody (Pab)
Catalog # AP21866b**Specification**

MAGI3 Antibody (C-Term) - Product Information

Application	WB,E
Primary Accession	Q5TCQ9
Reactivity	Human
Host	Rabbit
Clonality	polyclonal
Isotype	Rabbit IgG
Calculated MW	162949

MAGI3 Antibody (C-Term) - Additional Information**Gene ID** 260425**Other Names**

Membrane-associated guanylate kinase, WW and PDZ domain-containing protein 3,
Membrane-associated guanylate kinase inverted 3, MAGI-3, MAGI3, KIAA1634

Target/Specificity

This MAGI3 antibody is generated from a rabbit immunized with a KLH conjugated synthetic peptide between 1330-1360 amino acids from human MAGI3.

Dilution

WB~~1:2000

E~~Use at an assay dependent concentration.

Format

Purified polyclonal antibody supplied in PBS with 0.09% (W/V) sodium azide. This antibody is purified through a protein A column, followed by peptide affinity purification.

Storage

Maintain refrigerated at 2-8°C for up to 2 weeks. For long term storage store at -20°C in small aliquots to prevent freeze-thaw cycles.

Precautions

MAGI3 Antibody (C-Term) is for research use only and not for use in diagnostic or therapeutic procedures.

MAGI3 Antibody (C-Term) - Protein Information**Name** MAGI3**Synonyms** KIAA1634

Function Acts as a scaffolding protein at cell-cell junctions, thereby regulating various cellular and signaling processes. Cooperates with PTEN to modulate the kinase activity of AKT1. Its interaction with PTPRB and tyrosine phosphorylated proteins suggests that it may link receptor tyrosine phosphatase with its substrates at the plasma membrane. In polarized epithelial cells, involved in efficient trafficking of TGFA to the cell surface. Regulates the ability of LPAR2 to activate ERK and RhoA pathways. Regulates the JNK signaling cascade via its interaction with FZD4 and VANGL2.

Cellular Location

Cell membrane; Peripheral membrane protein. Cell junction, tight junction. Nucleus.

Note=Concentrates in specific sites at the plasma membrane and in the nucleus. In epithelial cells, it localizes at tight junctions (By similarity).

Tissue Location

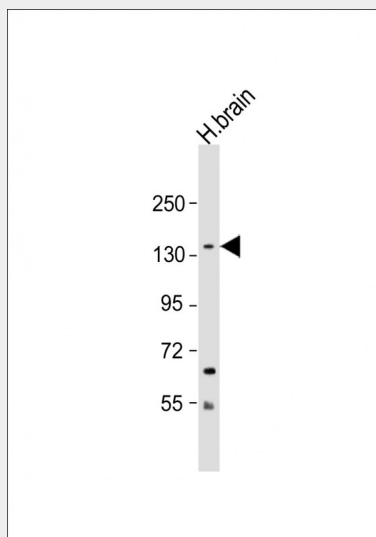
Widely expressed..

MAGI3 Antibody (C-Term) - Protocols

Provided below are standard protocols that you may find useful for product applications.

- [Western Blot](#)
- [Blocking Peptides](#)
- [Dot Blot](#)
- [Immunohistochemistry](#)
- [Immunofluorescence](#)
- [Immunoprecipitation](#)
- [Flow Cytometry](#)
- [Cell Culture](#)

MAGI3 Antibody (C-Term) - Images



Anti-MAGI3 Antibody (C-Term) at 1:2000 dilution + human brain lysate Lysates/proteins at 20 µg per lane. Secondary Goat Anti-Rabbit IgG, (H+L), Peroxidase conjugated at 1/10000 dilution. Predicted band size : 166 kDa Blocking/Dilution buffer: 5% NFDM/TBST.

MAGI3 Antibody (C-Term) - Background

Acts as a scaffolding protein at cell-cell junctions, thereby regulating various cellular and signaling

processes. Cooperates with PTEN to modulate the kinase activity of AKT1. Its interaction with PTPRB and tyrosine phosphorylated proteins suggests that it may link receptor tyrosine phosphatase with its substrates at the plasma membrane. In polarized epithelial cells, involved in efficient trafficking of TGFA to the cell surface. Regulates the ability of LPAR2 to activate ERK and RhoA pathways. Regulates the JNK signaling cascade via its interaction with FZD4 and VANGL2.

MAGI3 Antibody (C-Term) - References

Wu Y.,et al.J. Biol. Chem. 275:21477-21485(2000).
Franklin J.L.,et al.Exp. Cell Res. 303:457-470(2005).
Gregory S.G.,et al.Nature 441:315-321(2006).
Mural R.J.,et al.Submitted (JUL-2005) to the EMBL/GenBank/DDBJ databases.
Nagase T.,et al.DNA Res. 7:273-281(2000).